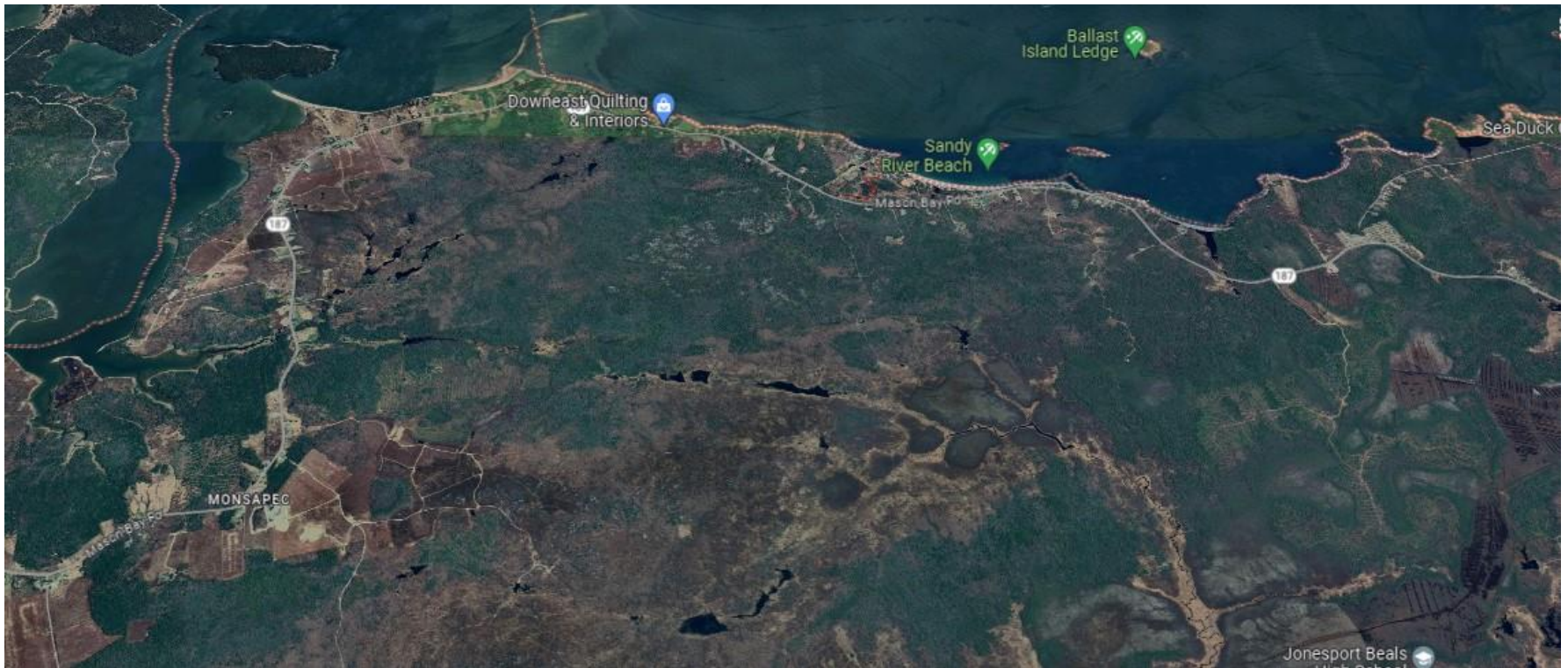


Mason's Bay



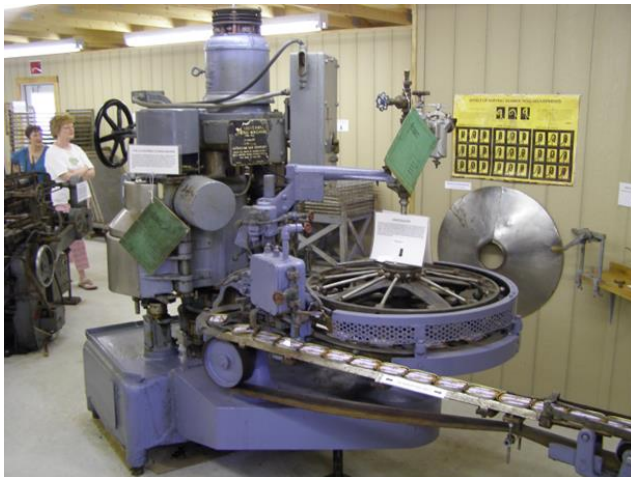
In the early years of settling in Jonesport, the Mason Bay District was mostly rural blueberry and wood land with Families owning large tracks of land. There were two different schools located in the “Bay” known as the Lower Bay and Upper Bay. Although there have been more houses built along the road and in small subdivisions throughout the “Bay”, there are still large tracks of remote land and blueberry fields.

NOTE: Any photos identified as from the Eastern Illustrating & Publishing Co. Collection, courtesy of the Penobscot Marine Museum, can be obtained as beautiful reproduction prints from the Penobscot Marine Museum at <https://penobscotmarinemuseum.org>

The Maine Coast Sardine History Museum (GPS 44.5401985, -67.5883908)



The museum was started by Ronald & Mary Peabody in July, 2008. It is full of information about the all the sardine factories that were located throughout the Downeast. It houses various exhibits including: fish flakes, canning labels, and scissors. There are also actual machines that were used in the canning process on display.



The Greenwood Cemetery (GPS 44.5512708, -67.5774411)



**Bangor Daily Whig & Courier,
Friday, July 07, 1899**

Today, Wednesday, Greenwood Cemetery Society is on the ground at work clearing cut the underbrush and cutting away the alders, preparatory to having lots laid out in lots.

**TOWN MEETINGS
SCHOOL NOTES**

March 11, 1907 Town Meeting – Voted to buy a lot for the town poor at Greenwood Cemetery.



There are 38 cemeteries located within the towns of Jonesport and Beals. Greenwood is the largest with over 2,200 gravesites.

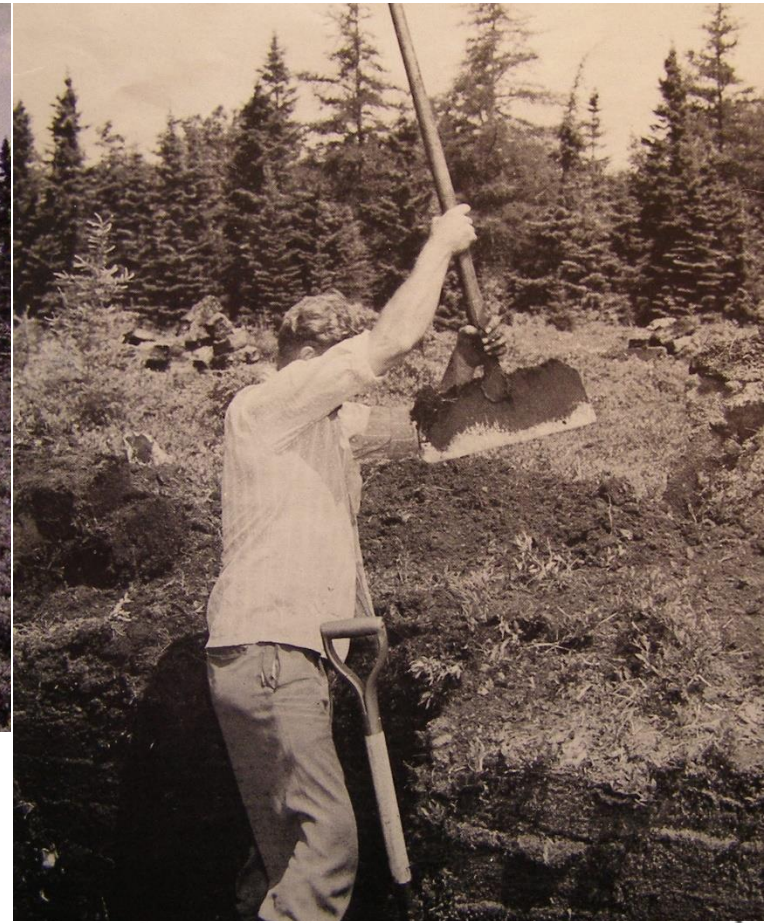
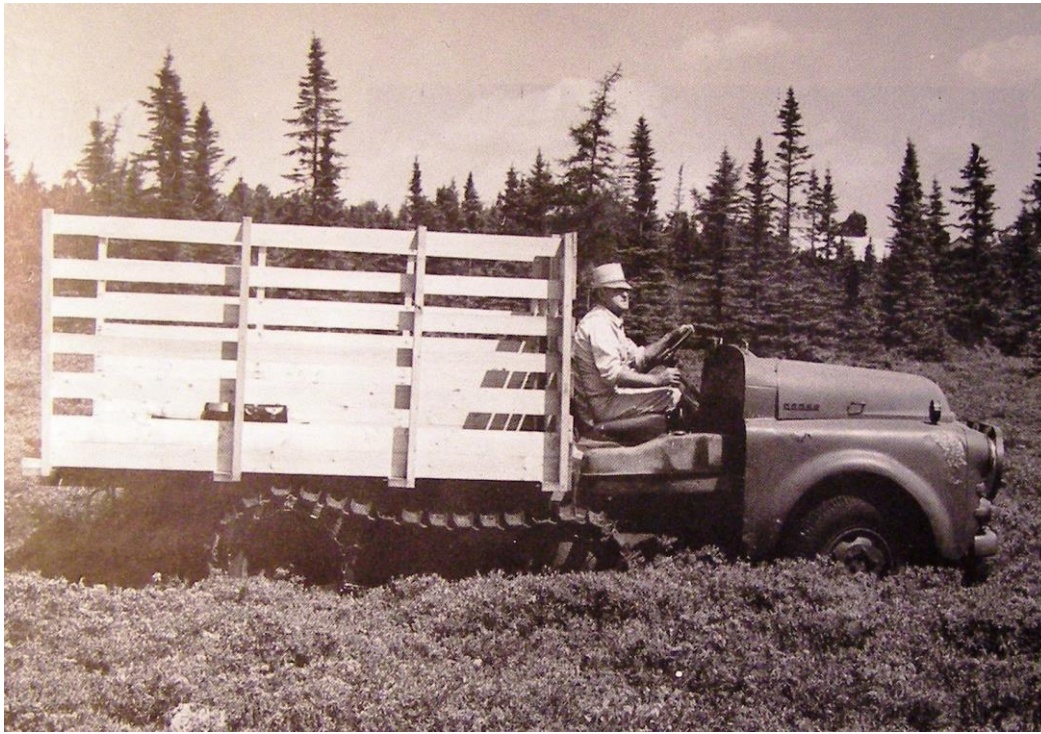


The Maine Peat Moss, Inc (GPS 44.5550013, -67.5797649)

PEAT MOSS

FROM A 10,000-YEAR-OLD MAINE BOG

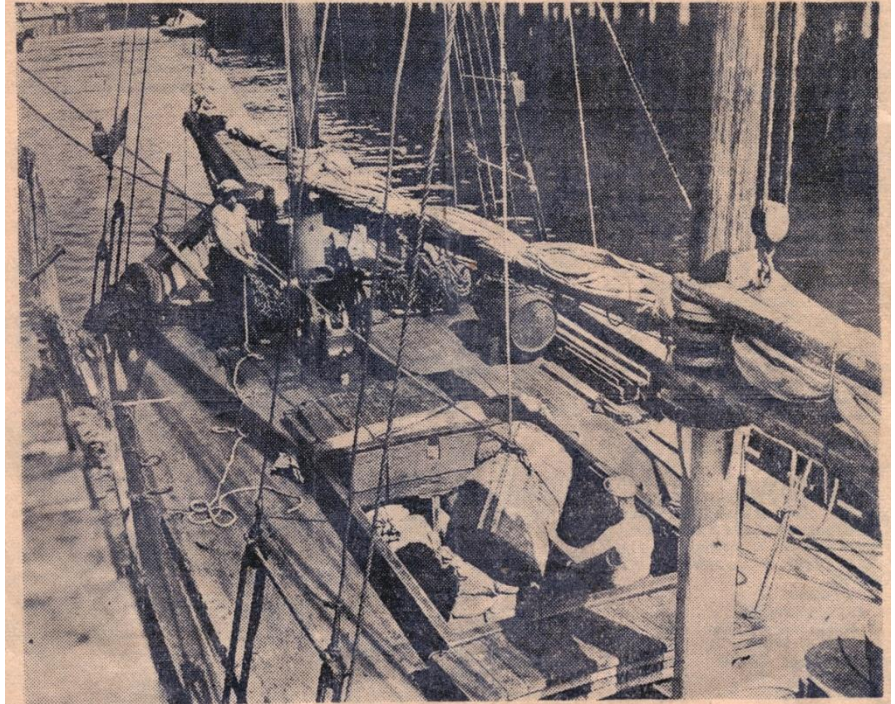




—The Rockland Democrat says that a company has been formed in that city, and that their agent has purchased in the town of **Jonesport** about 7000 acres of peat land and they intend to go largely into the manufacture of peat. The quality of the peat has been tested and found to be equal to any known in the country.



First Cargo Of Jonesport Peat Moss ⁹⁻¹⁻¹⁹³⁸
Is Unloaded Here From Coasting Vessel



Maine Central Model Railroad (GPS 44.5774408, -67.5730051)



In 1992, Harold “Buzzy” Beal began the process of building his dream model railroad. After several years of constructing, re-building several layouts, adding an addition onto his building, and rebuilding the tracks again, his dream finally became a reality.



The model railroad system became well-known throughout the area. It was newspaper articles and on several local television news programs.

Harold “Buzz” Beal adjusts the settings for the model railroad cars. All of the buildings and scenery were hand-made by Buzz and his wife, Helen.



Since the passing of Buzz and Helen, the railroad was moved. It is now on full display for all to see and enjoy at the Seashore Trolley Museum in Kennebunkport, Maine.

The Seaside Chapel (GPS 44.5774408, -67.5730051)



The original Mason's Bay Chapel in as it stood in 1938. It burned on June 3, 1968 at 12:30am



The New Seaside Chapel at Mason's Bay June 27, 1971





Dirigo Packing Company (approximate location GPS 44.61520, -67.56647)



Photo is from the scrapbook of Peter Hall. Although this picture identifies the building as LM Hinkley's Factory located in West Jonesport, it has been said that this is actually the Dirigo Packing Company Factory at Monsapac that was originally located in Mason's Bay and later floated to West Jonesport.



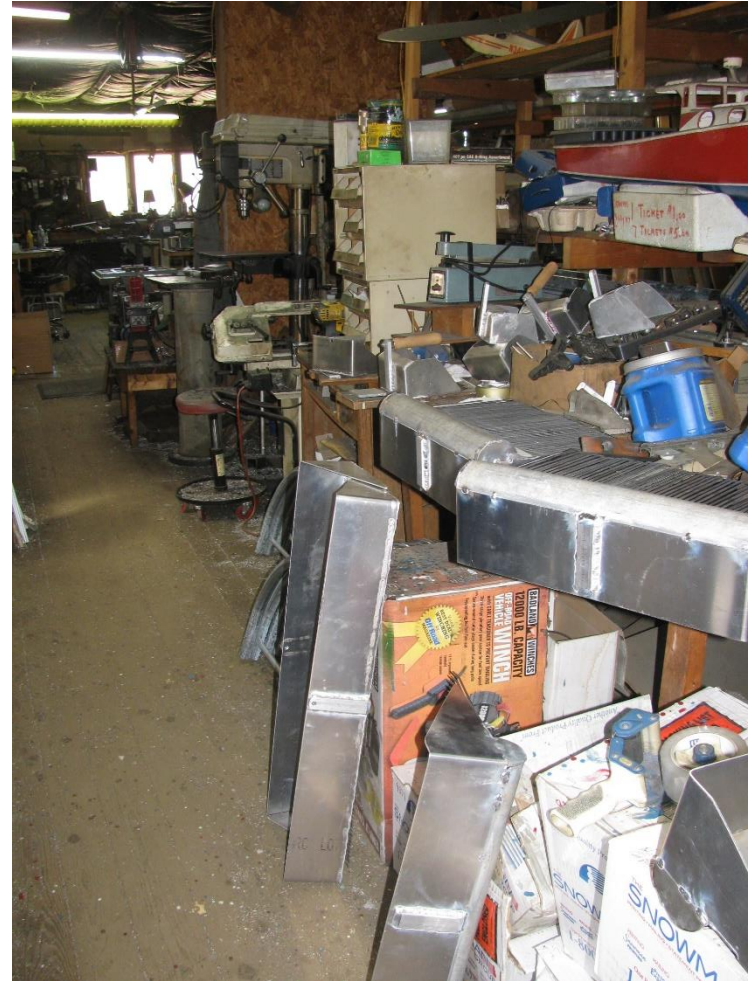
From the collection of Mark Edwards

Bangor Daily Whig & Courier, Wednesday, September 07, 1870

—The Factory at Jonesport, put up nearly 3,500 bushels of blueberries this season, says the Machias Union.

On April 22, 1908, Lena Farnsworth sold to Dirigo Packing Company a small piece of, land located on “Prince’s Point” just north of Flake Point in Mason’s Bay (WCRD Book282, Page 202). The same parcel was purchased from the Town of Jonesport for back taxes (\$9.15) by Lena’s husband, Emery Farnsworth at an auction held at the Jonesport Opera House on February 24, 1932. (WCRD Book 510, Page 5)

Hubbard Rake Co. (GPS 44.60860, -67.59846)



Ike Hubbard started his business after returning to Jonesport in the late 1980's. The Company makes rakes of many sizes and varieties. These rakes are shipped all over the United States.



Hubbard Rake Co doesn't make just rakes, the company also has contracts with other farming industries, where they supply items such as greenhouse frames, garden aerators, and compost bins.

White's Store. (GPS 44.6085505, -67.5992615)



Although it has been difficult to find pictures of the old Carl and Annie White General Store, many of the older people in town will tell about the large windows in front advertising tea, or going to the store to buy fresh strawberries. The store was located right across the road from the Homestead, which is now owned by Ike and Lois Hubbard. Through the years the store has had a few facelifts and is now a residence.

Upper Mason Bay School (GPS 44.6138626, -67.6030595)



UPPER MASON BAY SCHOOL CHILDREN
JONESPORT, MAINE
(About 1928)

Image found on Facebook



Image found on Facebook



The Fire House Sub-Station is now located on the site of the former Upper Mason Bay School.

UPPER MASON BAY SCHOOL CHILDREN JONESPORT, MAINE

(About 1928)

Top Row:

Arlene Jane (Garnett) Hayward
Melvin James "Junior" Donovan, Jr.
Edward Alonzo Berry
Donald Augustus Davis, Sr.
Gifford Bert White

Middle Row:

Stella (Donovan) Saddler
Alan H. White
Edward Roundy Peasley
Harold W. White
Thurman A. Berry

Front Row:

Thelma M. (Garnett) Gray
Hilda Harritt (Donovan) Palmer, Moffett
Gretha Belle (White) Eldridge
Edna F. (Berry) Davis, Davis, Dyer
Annie Alta (Donovan) Smith